



KANSAS GEOLOGICAL SOCIETY

BULLETIN

Volume 100 Number 2

March - April 2025

Established 1925

IN THIS ISSUE

AAPG MCS Meeting Announcement
October 7-9, 2025 Oklahoma City, OK

pages 10-12



Your 1/8 page ad here

**Use Your KGS Library
For All Your Printing Needs**

Old photos?
Old documents?

We can scan them for you!

Robert F. Walters Digital Library

The most complete source for Kansas data

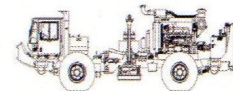
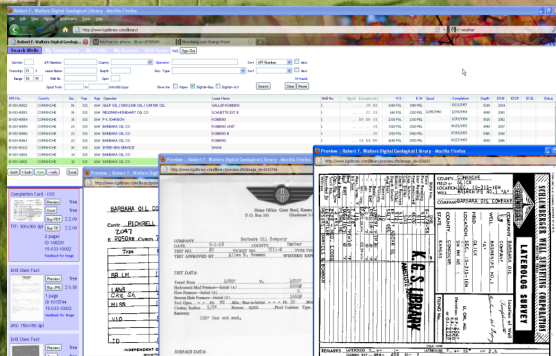
Database updated nightly

Day or Night

You can get to the data as you need it

www.kgslibrary.com

To Join: call 316-265-8676



**Proudly Celebrating 25+ Years
Acquiring Seismic Data Throughout the
Continental United States**

WICHITA

Nicolle Jausel
(316) 636-5552

Nicolle@paragongeo.com

DENVER

Kim Nordberg
(303) 888-8885

Knordberg@paragongeo.com

HOUSTON

Brent Propst
(832) 643-5158

Bpropst@paragongeo.com

OKLAHOMA CITY

Joe Broussard
(405) 213-9859

Jbroussard@paragongeo.com

website: www.paragongeo.com

We Invite You

To join the

***Kansas Geological
Foundation***

***\$50.00 membership is
tax deductible***

Call 316-265-8676

Or send checks to:

Kansas Geological Foundation

1704 S. Baehr

Wichita, KS 67209

Table of Contents

Features:

KGS Events: **No Events Scheduled**

Departments & Columns:

KGS Tech Talks	4
Advertiser's Directory	7
In Memoriam	15
Professional Directory	16
Kansas Geological Foundation Cornerstone and KGF News	19-21
Kansas Geological Foundation Memorials	22-24
Exploration Hilights by John Morrison - IOG	26-27

ON THE COVER:

**Hogback Ridges
Near Mora, New Mexico**

Photo by Marli Miller

The Kansas Geological Society Bulletin, which is published bimonthly in electronic format, seeks short papers dealing with any aspect of Kansas geology, including petroleum geology, studies of producing oil or gas fields, and outcrop or conceptual studies. Maximum length of papers is 6 pages as they appear in the Bulletin, including text, references, figures and/or tables, and figure/table captions. Inquiries regarding manuscripts should be sent to manager@kgslibrary.com or mailed to 1704 S. Baehr, Wichita, KS 67209. Specific guidelines for manuscript submission appear in each issue of the Bulletin, which can also be accessed on-line at the Kansas Geological Society web site at <http://www.kgslibrary.com>

SOCIETY Technical Meetings

All Technical Meetings will be on Zoom

Please remember to check the website for the most up to date information on Technical Talks

<http://www.kgslibrary.com/techtalks.cfm>

Note: For those geologists who need 30 professional development hours (pdh) to renew their licenses, there will be a sign-in sheet at each presentation and also a certificate of attendance.



***The New Home of the KGS
1704 S. Baehr***

KANSAS GEOLOGICAL SOCIETY



BOARD OF DIRECTORS

PRESIDENT
Seth Evenson

PRESIDENT-ELECT
Kimberly Black

SECRETARY
Jarred Leis

TREASURER
Lori Landes

DIRECTORS
Ryan Davis
David Barker
Doug Davis

ADVISORS
Kent Crisler
Roger Martin

BULLETIN STAFF

EDITOR
Wes Hansen (316) 772-6188

ADVERTISING
Kent Scribner (316) 640-1154

MEMORIALS
Wesley Hansen (316) 772-6188

EXPLORATION HIGHLIGHTS
John H. Morrison, III
Independent O&G (316) 263-8281

STATE SURVEY
KS Geological Survey (785) 864-3965

SOCIETY NEWS
KGS Library (316) 265-8676

MANAGER
(316) 265-8676

COMMITTEE CHAIRMEN

<u>Advertising</u>	Kent Scribner
<u>Advisory</u>	
<u>Annual Banquet</u>	Doug Davis
<u>Bulletin</u>	Wesley Hansen
<u>Computer Committee</u>	
<u>Continuing Education</u>	
<u>Distinguished Awards</u>	Brian Fisher
<u>Environmental</u>	Kent Matson
<u>Field Trip</u>	Jerry Honas
<u>Fishing Tournament</u>	
<u>Future Plans</u>	
<u>Golf</u>	Dave Barker
<u>Historian</u>	
<u>Library</u>	Ted Jochems
<u>Membership</u>	Larry Friend
<u>Nomenclature</u>	John H. Morrison, III
<u>Picnic</u>	Beth Isern
<u>Public Relations</u>	
<u>Shooting Tournament</u>	Seth Evenson
<u>Technical Programs</u>	Doug Davis
<u>Technical Committee</u>	Ryan Dixon
<u>Finance Committee</u>	Tim Hellman, Chairman
Members:	Chuck Brewer, David Doyel, Paul Gunzelman and Tom Funk

K.G.S. LIBRARY

PHONE 316-265-8676 **FAX** 316-265-1013
email: frontdesk@kgslibrary.com or
Web: www.kgslibrary.com

A.A.P.G. DELEGATES

Dennis Hedke	Wesley Hansen
2025	2025

The KGS *Bulletin* is published bi-monthly by the Kansas Geological Society, with offices at 1704 S. Baehr, Wichita, Kansas 67209 Copyright 2024, The Kansas Geological Society. The purpose of the *Bulletin* is to keep members informed of the activities of the Society and to encourage the exchange and dissemination of technical information related to the Geological profession. Subscription to the *Bulletin* is by membership in the Kansas Geological Society. Limited permission is hereby given by the KGS to photocopy any material appearing in the KGS *BULLETIN* for the non-commercial purpose of scientific or educational advancement. The KGS, a scientific society, neither adopts nor supports positions of advocacy, we provide this and other forums for the presentation of diverse opinions and positions. Opinions presented in these publications do not reflect official positions of the Society.



Nine Trucks Serving

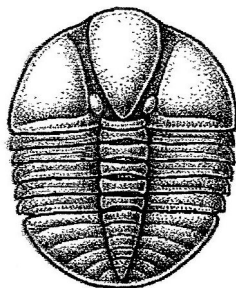
Kansas--Colorado--Texas--Nebraska--Illinois

DST's

Back Pressure testing (G1 7 G2)

Slick line services using the same Weatherford

Electronic Pressure Gauges used on DST's



1-800-728-5369

FAX 1-785-625-5620

www.trilobitetesting.com

trilobite@eaglecom.net

SHOPS LOCATED IN:

Hays, KS

Scott City, KS

Pratt, KS

Oberlin, KS

CAN YOU NAME THE CRITTER?

Sponsored by Trilobite Testing, Inc.

Is your paleo up to date?

If you know the name of the trilobite,
submit your guess via e-mail to
manager@kgslibrary.com

Remember that *Trilobite Testing* is
sponsoring your efforts, so be sure to thank
Paul Simpson the next time you see him.

**Bulletin committee members and PhD's in
Paleontology are prohibited from entering.**



Kansas Geological Society (KGS) Medallion for Scientific Distinction and Excellence

The Kansas Geological Society (KGS) Medallion for Scientific Distinction and Excellence may be given annually for peer-recognized, sustained significant scientific contributions to all facets of applied Kansas geology, including work either in Kansas or in surrounding states if the latter contributions pertain directly and significantly to Kansas geology. No more than one award may be given each year, an award does not have to be given every year, and members of the KGS Awards Committee that handle nominations for this award cannot nominate themselves for this award. The candidates need not be active KGS members, and they must be living at the time of selection. The primary consideration in the selection of a candidate shall be his or her sustained, published, significant contributions to any facet of Kansas geology. Contributions may be varied in form such as development of geologic concepts, advancement in discovery thinking, and recognized leadership in exploration concepts. Oral and/or written publications in peer-reviewed geological venues is a requisite criterion for any candidate for this award. The name of a candidate shall be presented by the Awards Committee to the KGS Board of Directors for their approval. Once approved, the recipient shall be presented an appropriate award in the form of a medallion or plaque recommended by the Awards Committee and approved by the Board of Directors at the annual business meeting of the society. This is a new award given by the KGS for distinction and achievement in Geological research in Kansas.

Awards Committee members are Sal Mazzullo and Mike Dealy

2025 SWS AAPG

April 26

Fort Worth, TX

SEG/AAPG

IMAGE 2025

August 25, 2025

Houston, TX

2025 AAPG MCS

October 7-9

Oklahoma City, OK

Log in to

Walters Digital Library At

www.kgslibrary.com

Log in as our guest

and see the Society's Database

A convenient way to see what you might want to
order!

Call or email your order to:

316-265-8676

frontdesk@kgslibrary.com

ADVERTISER'S DIRECTORY

Duke Drilling	<i>page</i> 25
Kansas Geological Foundation	19
Murfin Drilling Company, Inc	25
PARAGON Geophysical Services, Inc	2
Professional Directory	16
Trilobite Testing	6
Walters Digital Library	2

ADVERTISER'S RATES: 2025

Full Page	B&W	Color
6 issues	\$2,000	\$2,500
3 issues	\$1,080	\$1,325
1 issue	\$480	\$525
1/2 Page		
6 issues	\$1,000	\$1,500
3 issues	\$540	\$825
1 issue	\$225	\$350
1/4 Page		
6 issues	\$600	\$900
3 issues	\$325	\$525
1 issue	\$150	\$250
1/8 Page		
6 issues	\$300	\$500
3 issues	\$175	\$325
1 issue	\$75	\$185
Professional Ad (Business Card)		
6 issues	\$90	\$180

Editor's Page

Dear KGS members and friends,

For the next several months I will be focusing and harping on the lot of you to support the AAPG MCS meeting October 7-9, 2025 in Oklahoma City. The KGS is the host organization this year, but it has been decided that all future MCS Conventions will be held in Oklahoma City. The reason is simply that a larger source of sponsorships and attendance are in Oklahoma. Most of the other Mid-Continent sections do not have the membership numbers or revenue sources like Oklahoma City.



I hope that the vast majority of you all, old or young, will register and attend this year. The Mid-Continent Field Conference last Fall only had 4 local KGS members attend. I'm sure some of you don't want to spend the money to attend these events, but holy crap, I haven't had any consulting income in over a year, so cowboy up.

Pages 9-11 contain the information for sponsorships and exhibitor booths, I was assigned the job of being on the Exhibitor Committee. I shall be bugging the service companies that I have had the pleasure of working with over my 40+ years in the oil patch to commit to a booth and/or attendance at this years convention.

The KGS Bulletin is only online via the KGS website. This, of course, removes the opportunity to read a hard copy during your "meditation time." A small group of members and friends took advantage of my offer to email them a pdf when the bulletin was ready. If interested in being added to that list, one can email me at whansen4651@sbcglobal.net

That is all for now,

Wes

On a side note, in an experiment to see if anyone actually looks at and closely reads, the online bulletin, I placed an ad on the Professional Directory listing page, offering the first round of an adult beverage on me for the first 15 respondents who correctly followed the instructions. Wouldn't you know, no takers. The "you are too late" ad is in this issue. The offer was in the last 5 issues with an occasional change in the ad fill color.

AAPG Midcontinent Sectional 2025

"Exploring New Plays and New Pays"

OKLAHOMA CITY CONVENTION CENTER

October 7th - 9th, 2025

Sponsorship & Exhibitor Opportunities

Dear Potential Sponsors and Exhibitors,

The AAPG Midcontinent Sectional (MCS) 2025, hosted by the Kansas Geological Society, is thrilled to return to Oklahoma City following the successful 2023 conference. We're currently planning and laying the groundwork for an engaging event at the Oklahoma City Convention Center.

Our theme, "Exploring New Plays and New Pays," will guide a technical program focused on cutting-edge advancements in oil and gas development, learning about the new surge in hydrogen and helium exploration, and discovering how the Midcontinent is playing a role in exploring for rare earth elements and critical minerals.

The convention is expected to host over 500 geologists with ties to the Midcontinent and other basins. As a sponsor, you will help provide funds to bring in guest speakers, help defer costs so students and independents can afford to attend, and to help showcase our geological community.

The conference will serve as a premier networking hub, fostering collaborations that drive resource optimization and economic growth. We're excited to offer exhibitors a prime location in Exhibit Hall C, which will also host the Ice Breaker, luncheons, poster sessions, and coffee breaks.

We invite you to join us in exploring new frontiers in energy and contributing to the success of the AAPG Midcontinent Sectional 2025. Please feel free to contact Doug Davis at doug5696@gmail.com and/or Kerry Parham at tfxp@cox.net for more information.

Thank you and we look forward to working with you!

Doug and Kerry

Become a Sponsor today by visiting the links at www.aapgmcs.org

Alternatively, Sponsors can fill out the information below and mail a check to:

Kansas Geological Society Contact Person: _____

1704 S. Baehr St.

E-Mail: _____

Wichita, KS 67209

Phone: _____

Sponsoring Organization Name: _____

Please make checks out to the Kansas Geological Society with MCS Sponsor in the memo.

Sponsors, if you mail a check, please notify Molly Turko (TurkoTectonics@gmail.com) so that we can collect your logo and information



www.AAPGMCS.org



AAPG Midcontinent Sectional 2025 Sponsorship Opportunities

Classic Sponsorships

Petroleum- \$10,000

Extra large logo on website, social media, banners, and program; 2 exhibitor booths*, and 8 complimentary registrations with luncheon tickets.

Methane- \$5,000

Large logo on website, social media, banners, and program; 1 exhibitor booth*, and 4 complimentary registrations with luncheon tickets.

Hydrogen - \$2,500

Medium logo on website, social media, banners, and program; 1 exhibitor booth*, and 2 complimentary registrations with luncheon tickets.

Rare Earth Elements - \$1,000

Medium logo on website, social media, banners, and program; 1 complimentary registration with luncheon tickets.

Critical Minerals - \$500

Small logo on website, social media, banners, and program; 2 luncheon tickets.

Custom Sponsorships

Field Trip - \$3,500 (1 available)

Large logo on the guidebook, 4 complimentary tickets to field trip.

Coffee Bar - \$1,000 (4 available)

Logo on website, social media, banners, program, and coffee bar.

Ice Breaker - \$2,000 (2 available)

Logo on website, social media, banners, program, and at the Ice Breaker.

Luncheon - \$2,000 (2 available)

Logo on website, social media, banners, and program. Recognition at the luncheon.

Lanyard - \$1,800 or purchase price

Logo on website, social media, banners, and program.

Program - \$2,000

Logo on website, social media, banners, and front/back cover of the program.

Short Course - \$1,000

Large logo on the course materials, 2 complimentary short course tickets.

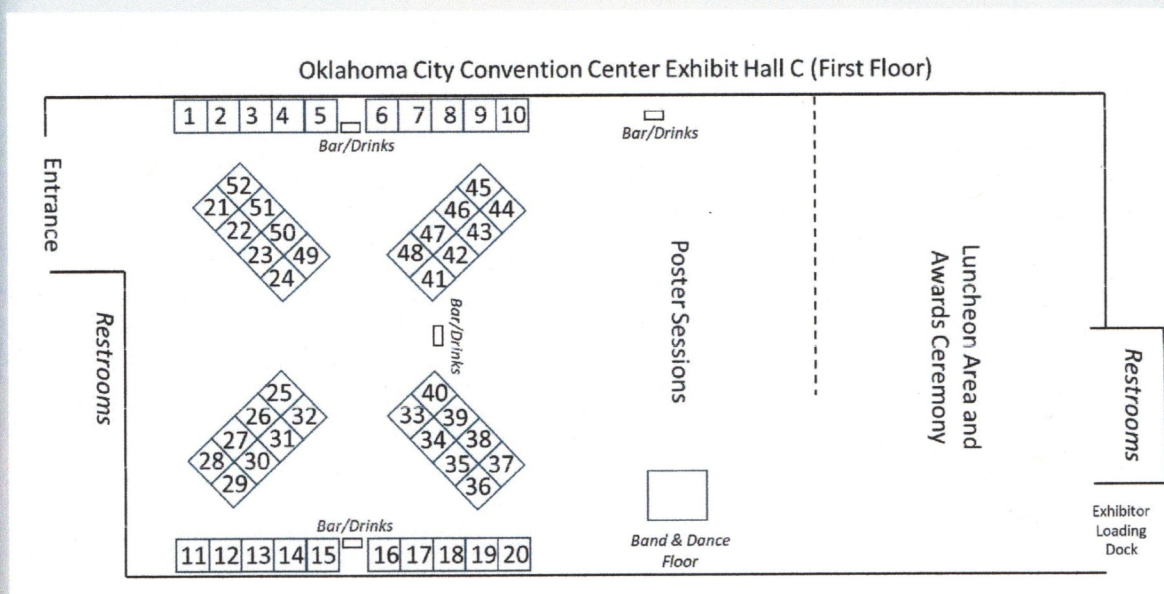
Swag Sponsor

Logo on selected swag items given out at registration

**Exhibitor booth can be substituted for 2 additional registrations with luncheon tickets*



AAPG Midcontinent Sectional 2025 Exhibitor Opportunities



BOOTH OPTIONS

SINGLE BOOTH 10X10 - \$1,200

TWO BOOTHS 10X10 EACH- \$2,000

NON-PROFIT BOOTHS 10X10- \$600

- Includes a draped table, 2 chairs, wastebasket and ID sign
- 2 FULL registrations per 10x10 space; your product/service description searchable online and printed in the program book. Lunch, snacks, and drinks provided throughout the day.

EXHIBIT HOURS:

Tuesday Oct. 7, 5:00pm-8:00pm (during Icebreaker)

Wednesday Oct. 8, 8:00am-5:00pm

Thursday Oct. 9, 8:00am-3:00pm

Become an Exhibitor today by visiting the links at www.aapgmcs.org

Here you will be able to select your booth(s), pay online, and upload your logo and company information.



www.AAPGMCS.org



2025 KGS Board

President - Seth Evenson

VP-President Elect - Kimberly Black

Secretary - Jarred Leis

Treasurer - Lori Landes

Directors - Dave Barker Doug Davis

Ryan Davis - Director at Large

**We Invite You
To join**

***Kansas
Geological
Foundation***

***\$50.00 membership is
tax deductible***

Call 316-265-8676

Or send checks to:

Kansas Geological Foundation

1704 S. Baehr

Wichita, KS 67209

Your Company

1/4 page ad

here

An Open Invitation to Young Geologists to Join AAPG

I would like to extend a special invitation to recent graduates and other young geological professionals to join AAPG. There are many young geologists outside the Wichita area that I have never met. They may work out of Great Bend or Hays, Kansas working with smaller oil and gas producers or working on their own as well site geologists. Kansas does have a future for the foreseeable future. The time is now to meet others from larger regional companies to forge a relationship for future employment. Young minds will be needed to replace those retiring and that other bad option.

I joined AAPG late in my career, much to my regret. I now serve voluntarily as a delegate for the Mid-Continent Section representing the Kansas Geological Society.

Respectfully yours,

Wesley D. Hansen Bulletin Editor and AAPG Delegate



Robert F. Walters Digital Library

Log in as our Guest

username: guest

password: guest



316-265-8676

**Let Us Print Your Geo Reports
And Save Your Time For Finding More Oil & Gas**

Top Quality Color Printing For Our Membership

Email your files to: kgsorders@gmail.com

**Get Your Maps copied at the KGS library
We can scan, copy, and print up to 44" wide**

Color or Black & White

Solid Color @ \$4.00/sq. ft.

Line maps with color @ \$3.00/sq. ft.

In Memoriam

KGS and Industry Members Lost in 2024 and 2025

2024

Paul Ramondetta

George Jones

Cecil O'Brate

Bob McCann

Arden Ratzlaff

Gary Griffith

Steve Davis

Austin Garner

2025



PROFESSIONAL DIRECTORY

Kirk Rundle Consulting Geophysicist

3D Seismic Design, Acquisition to Processing QC.,
Interpretation and Analysis, Subsurface Integration
7340 W. 21st N., Ste. 100
Wichita, Kansas 67205

Office: 316-721-1421 Fax: 316-721-1843
Email: kirk@rundlegeo.com

Covey - The Well Watchers

"One Thousand Wells and Counting"

Curtis E. Covey Wellsite Petroleum Geologist
Gas Trailer Cell: 316-217-4679 Office: 316-776-0367
Email: wellsitgeol@gmail.com
6548 Bedford Circle Derby, Kansas 67037
Gas Detection Trailer & Internet/Phone Communications



GRAVITY OIL
LLC

ELI J. FELTS
CONSULTING PETROLEUM GEOLOGIST

316.204.5059 EJFELTS47@GMAIL.COM

- VERTICAL & HORIZONTAL WELL-SITE SUPERVISION
- PROSPECT GENERATION & EVALUATION
- WELL-LOG ANALYSIS
- DIGITAL MAPPING SERVICES & GEOLOGICAL REPORTS
- KCC & COMPLIANCE SPECIALIST
- PROFESSIONALLY INSURED

COMPETITIVE PRICING & STATE OF THE ART SERVICES YOU CAN COUNT ON
CALL TODAY & RECEIVE (1) FREE DAY WELL-SITE TO NEW CLIENTS

IOGSI INDEPENDENT
OIL & GAS SERVICE, INC.
Digital Well Data You Can Trust

JOHN H. MORRISON, III
President

www.IOGsi.com Phone: 316-263-8281
3909 N. Sweet Bay St. Fax: 316-263-0874
Wichita, Kansas 67226-3501 Email: jmmorrison@iogsi.com

**The free adult beverage offer
has expired with no takers.
Maybe I'll make it again
sometime down the road.**

**Your business card ad
Could be right here
For only \$90/year**

ROGER L. MARTIN

Independent Petroleum Geologist

200 E 1st St, Ste 405, Wichita, KS 67202

Cell: 316-833-2722 Office: 316-250-6970
KS Field Cell: 316-655-1227

Email: rogermartingeo@yahoo.com

WESLEY D. HANSEN

Consulting Geologist

Well site Supervision • Geologic Studies
PO Box 46 Whitewater, KS 67154
Office/Mobile: (316) 772-6188
whansen4651@sbcglobal.net
Kansas - Colorado - Nebraska
42 Continuous Years in the Oil Patch

M. ((Brad))ford Rine, Geologist

Licensed, Registered, Certified

PROSPECT EVALUATION	PROSPECT ORIENTATION
WELLSITE SUPERVISION	DRLG/COMPL CONSULTATION
RESERVOIR STUDIES	PROPERTY EVALUATION
EXPERT TESTIMONY	BANJO PICKER
100 South Main Suite #415	Email: rinemb@sbcglobal.net
Wichita, Kansas 67202	Office & Cell: (316) 250-5941

MELLAND ENGINEERING, INC.

Petroleum Engineering & Geological Consulting

James E. Melland, P.E., P.G.

President

Office: (620) 241-4621 Fax: (620) 241-2621
jamesm@mellandengineering.com
www.mellandengineering.com
P.O. Box 841, McPherson, KS 67460-0841

Macklin Armstrong

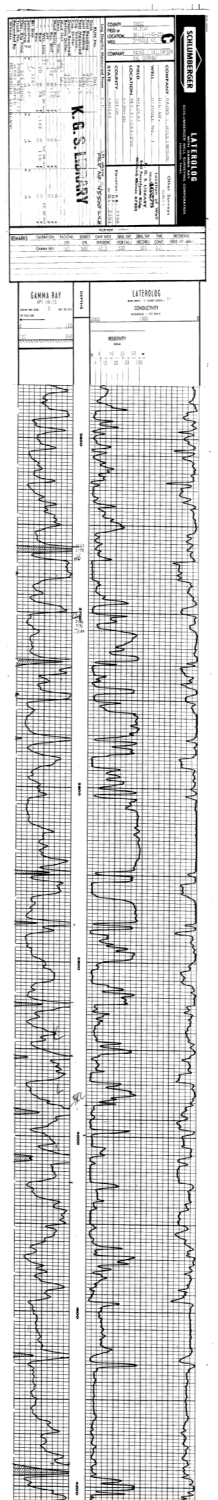
Consulting Geologist

Kansas - Colorado - Nebraska

Wellsite Supervision Prospect Evaluation
armstrong.mac@gmail.com
316-209-5047

**Your business card ad
Could be right here
For only \$90/year**

*The KGS Library is pleased to
announce a new service*



Creating
LAS files
from our logs
or yours

**\$20.00 per
curve!!**

**Quick
turn-around**

Send us your log file
or tell us which of
ours you would like
converted.

316-265-8676



**Kansas Geological
Foundation
Video / DVD Collection**

The KGF has an extensive
collection of
videos available for check-out at
no charge.

Only pay for shipping back.

These are ideal for classroom or
general public viewing.

See the web for titles &
descriptions

www.kgfoundation.org

Call 316-265-8676

Ask for Rhonda to check
out videos

A shout out to Kansas Oil and Gas Industry

Service Companies

Oil prices are recovering nicely with WTI about \$80 per barrel and Kansas posted price about \$70 per barrel

Now is the time to resume advertising in the KGS Bulletin

Let our several hundred members know that your company is still active and ready to work.

Your half page ad would look great here.

Color or black and white

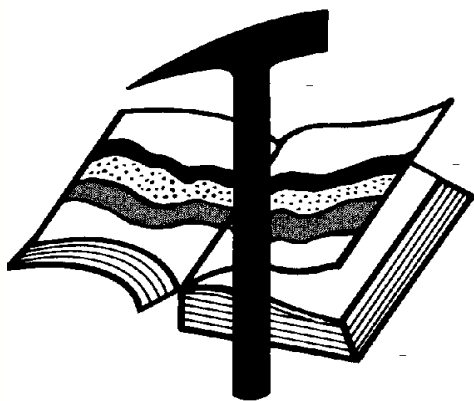
Contact Kent Scribner at 316-640-1154

KGS members please check your files

Fellow KGS members, please remember to check your files of elogs and geologist reports against the KGS paper library and the WDL before discarding them. I was contacted by John Morrison recently about a well I watched years ago that had some tops and DST info missing from his completion card. I took pics from my geo report of tops and DST results and sent them to John to update his card data. If I was to go through all of my files, I'm sure I have many logs and geo reports that are not in the files of either the KGS paper or the WDL. Before I hang things up in my career, I vow to go through all of my data and get it donated and scanned.

KCC rules allow an operator to hold information confidential for a two year period. As long as the well in question is older than the two year period, one can release the data. If one has concerns about alienating a client, of course, feel free to ask for permission.

Wes Hansen



Kansas Geological Foundation

Web Site: www.kgfoundation.org

**212 North Market
Wichita, Kansas 67202**

A not-for-profit educational and scientific corporation

GOALS:

- promote geology and earth science
- preserve geological records
- establish memorials and endowments
- support field trips and seminars
- financial aid and grants to students

PLEASE HELP SUPPORT THE FOUNDATION

Kansas Geological Foundation Services

The Kansas Geological Foundation provides the following services as a part of the organization's commitment to educate the public regarding earth science.

Speaker's Bureau

A list of speakers available to talk about various aspects of geology may be obtained by contacting Wes Hansen at the KGS Library, 265-8676. This service is free to the public.

DVD/Videotape Library

The KGF maintains a DVD & videotape library focused primarily on the various fields of earth science. These tapes may be checked out without charge by the public. To obtain a list of tapes, please contact the KGS Library, 1704 S, Baehr Wichita, KS 67209 or call Wes Hansen at 265-8676.

The Kansas Geological Foundation was founded in March, 1989 as a not-for-profit corporation under the guidelines of section 501(c)(3) of the tax code to provide individuals and corporations the opportunity to further the science of geology. It is dedicated to providing charitable, scientific, literary and educational opportunities in the field of geology for the professional geologist as well as the general public.

KGF can receive in-kind donations through which the donor may receive a tax deduction. Of equal importance, the KGF provides the financial resources to sort, process and file this data at the KGS library. If you have a donation to make, please contact the KGF at 265-8676.

Your tax-deductible membership donation helps to defray the cost of processing donations and to support public education programs about the science of geology. Annual membership begins at \$50.00 per year. Donations of \$100.00 or more are encouraged through the following clubs:

Century Club	\$ 100 to \$ 499
\$500 Club	\$ 500 to \$ 999
Millennium Club	\$1000 to \$5000
President's Club	\$5000 and over

Kansas Geological Foundation

Kansas Geological Foundation News

Spring 2025 KGF Scholarship Recipients

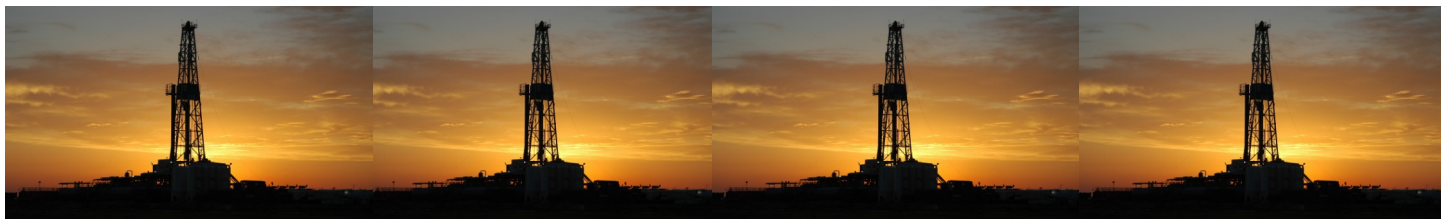
Name	University	Scholarship	Amount
Willa Kelpé	University of Kansas	KGF Scholarship	\$1000.00
Westin Scott	University of Kansas	KGF Scholarship	\$1000.00
Eliot Manning	University of Kansas	KGF Scholarship	\$1000.00
Alexi Sommerville	University of Kansas	KGF Scholarship	\$1000.00

KGF Grants

Sarah Lamm, PhD candidate at KU

\$3500.00 for Rocks and Rockets Event in Colby

August 2025



Kansas Geological Foundation News

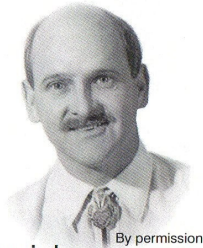
Students: The KGF awards scholarships each December and May. Check with your department chairs for applications. You must submit complete applications by the deadline.

Scholarship Applications for the Fall semester will be due by May 1, 2025.

Scholarship Applications for Spring semester will be due by December 1, 2025

Grants to help with research on Kansas related geology are also considered for aid.

The Kansas Geological Foundation Needs You!



The KGF provides the financial resources to sort, process and file, in-kind donations of geological data at the KGS library. Due in large part to the KGF this unique and rare well of information is being made available to all. Please consider telling your company management and colleagues about the benefits of a library that continues expanding in part because of the KGF.

We very much value and need your financial support.

KGF Officers and Board Members

Executive Director-Liaison Kerry Parham

President - Tim Hellman

Vice President -

Treasurer - Jacob Dyson

Secretary - Beth Isern

Board Members

Brad Rine (25) Dennis Hedke (25)

Nick Hixon (25) Kent Crisler

Rusty Mourning

Scholarships - Nick Hixon

Grants - Dennis Hedke

Publicity - Wes Hansen

PLEASE SUPPORT THE INTEGRATION PROJECT BY DONATING FINANCIALLY TO THE KANSAS GEOLOGICAL FOUNDATION

Kansas Geological Foundation Memorials

KGS Member	Date Deceased	Memorial Established
Dan Bowles	09/89	1990
John Brewer	10/89	1990
George Bruce	08/89	1990
Robert Gebhart	01/90	1990
Ray Anderson, Jr.	11/90	1990
Harold McNeil	03/91	1991
Millard W. Smith	08/91	1991
Clinton Engstrand	09/91	1991
M.F. "Ted" Bear	10/91	1991
James & Kathryn Gould	11/91	1991
E. Gail Carpenter	06/91	1993
Benton Brooks	09/92	1992
Robert C. Armstrong	01/93	1993
Nancy Lorenz	02/93	1993
Norman R. Stewart	07/93	1993
Robert W. Watchous	12/93	1993
J. George Klein	07/94	1994
Harold C.J. Terhune	01/95	1995
Carl Todd	01/95	1995
Don R. Pate	03/95	1995
R. James Gear	05/95	1995
Vernon Hess	06/95	1995
E. K. Edmiston	06/95	1995
Jack Rine	07/95	1995
Lee Cornell	08/95	1995
John Graves	10/95	1995
Wilson Rains	10/95	1995
Heber Beardmore, Jr.	09/96	1996
Elmer "Lucky" Opfer	12/96	1996
Raymond M. Goodin	01/97	1997
Donald F. Moore	10/92	1997
Gerald J. Kathol	03/97	1997
James D. Davies	08/88	1997
R. Kenneth Smith	04/97	1997
Robert L. Dilts	05/97	1997
Delmer L. Powers	06/72	1997
Gene Falkowski	11/97	1997
Arthur (Bill) Jacques	01/98	1998
Bus Woods	01/98	1998
Frank M. Brooks	03/98	1998
Robert F. Walters	04/98	1998
Stephen Powell	04/98	1998
Deane Jirrels	05/98	1998
William G. Iversen	07/98	1998
Ann E. Watchous	08/98	1998
W.R. "Bill" Murfin	09/98	1998
Donald L. Hellar	11/98	1998
Joseph E. Rakaskas	01/99	1999
Charles W. Steincamp	02/99	1999
Robert and Betty Glover	10/96	1998
Howard E. Schwerdtfeger	11/98	1999
W. W. "Brick" Wakefield	03/99	1999
V. Richard Hoover	01/00	2000
Warren E. Tomlinson	01/00	2000
James A. Morris	01/00	2000
Eric H. Jager	03/00	2000
Kenneth W. Johnson	03/00	2000

Kansas Geological Foundation Memorials

KGS Member	Date Deceased	Memorial Established
Dean C. Schaaake	03/00	2000
Fred S. Lillibridge	05/00	2000
Jerry A. Langrehr	07/00	2000
Clark A. Roach	07/00	2000
Floyd W. "Bud" Mallonee	10/00	2000
Ralph W. Ruuwe	09/00	2000
Robert L. Slamal	02/01	2001
Jerold E. Jespersen	06/01	2001
William A. Sladek	06/01	2001
Harlan B. Dixon	06/01	2001
Edward B. Donnelly	08/01	2001
Richard P. Nixon	02/02	2002
Robert W. Frensley	12/01	2002
Gerald W. Zorger	01/02	2002
Don L. Calvin	03/02	2002
Claud Sheats	02/02	2002
Merle Britting	2002	2002
Harold Trapp	11/02	2002
Donald M. Brown	11/02	2003
Elwyn Nagel	03/03	2003
Robert Noll	09/03	2003
Benny Singleton	09/03	2003
Jay Dirks	2003	2003
J. Mark Richardson	02/04	2004
John "Jack" Barwick	02/01	2004
Richard Roby	03/04	2004
Ruth Bell Steinberg	2004	2004
Gordon Keen	03/04	2004
Lloyd Tarrant	05/04	2004
Robert J. "Rob" Dietterich	08/96	2004
Mervyn Mace	12/04	2004
Donald Hoy Smith	04/05	2005
Richard M. Foley	06/05	2005
Wayne Brinegar	06/05	2005
Charles B. Moore	09/96	2005
Jack Heathman	05/06	2006
Charles Kaiser	09/06	2006
Rod Sweetman	08/06	2006
Karl Becker	10/06	2006
Frank Hamlin	10/06	2006
Marvin Douglas	12/06	2006
Robert W. Hammond	04/07	2007
Eldon Frazey	04/07	2007
Pete Amstutz	05/07	2007
Charles Spradlin	05/07	2007
Donald R. "Bob" Douglass	09/07	2007
Vincent Hiebsch	11/07	2007
Glen C. Thrasher	03/08	2008
Peg Walters	06/08	2008
Theodore "Ted" Sandberg	07/08	2008
James Ralstin	11/08	2008
Earl Brandt	04/09	2009
Walter DeLozier	05/09	2009
Don D. Strong	1/10	2010
John Stone	02/10	2010
Craig Caulk	03/10	2010
Joseph E. Moreland, Jr.	03/10	2010

Kansas Geological Foundation Memorials

KGS Member	Date Deceased	Memorial Established
Gene Garmon	03/10	2010
James F. Dilts	05/10	2010
Jerry Pike	05/10	2010
Donald Hollar	06/10	2010
Delbert Costa	08/10	2010
John Tanner	08/10	2010
William (Bill) Owen	09/10	2010
Harold (Hal) Brown	10/10	2010
Edmund G. Lorenz	11/10	2010
Thomas E. Black	05/11	2011
Wayne E. Walcher	07/11	2011
Henry F. Filson	07/11	2011
Thomas Ray	07/11	2011
Edgar E. Smith	09/11	2012
Marilyn Messinger	06/13	2013
Micheal Mitchell	09/13	2013
Orvie Howell	11/13	2013
James Thompson	11/13	2013
Dick Rowland	09/13	2014
Robbie Thompson	12/13	2014
Kris Kennedy	04/14	2015
Annette Hedke	02/15	2015
James Devlin	04/15	2015
Robert Gensch	09/15	2015
Jerald Rains	05/16	2016
Max Houston	05/16	2016
Robert "Gus" Messinger	01/17	2017
Jimmy Wayne Gowens	04/17	2017
Walter H. Martz Jr.	01/18	2018
Gary Sandlin	01/17	2018
Douglas McGinness	12/16	2018
Allen Siemens	06/18	2018
Ernest R. "Ernie" Morrison	09/18	2018
E. G. "Elbie" McNeil	12/18	2018
Robert Maxwell (Bob) Euwer	1/19	2019
J. Fred Hambright	12/18	2019
W. Lynn Watney	7/19	2019
Byron Hummon	12/18	2019
Mike Raymond	11/19	2019
James Roberts, Jr.	3/19	2019
Herb Johnson	8/19	2020
Lloyd Parrish	2/20	2020
Bruce Reed	5/20	2020
Bob Scull	6/20	2020
Thornton E. Anderson	7/20	2020
Don Shawver	12/16	2020
Phillip Hart	12/20	2021
Timothy Lauer	05/21	2021
Fredrick Stump	09/21	2021
Larry J. Richardson	10/21	2021
Robert Cowdery	12/23	2023
Bill Ham	12/21	2023

18 Drilling Rigs
To depth of 9,500 ft.



WESTERN KANSAS
SOUTHERN NEBRASKA
EASTERN COLORADO
OKLAHOMA PANHANDLE

For contract information contact:

William Murfin
Drilling Manager

316-258-8888 (Direct)
316-267-3241 (Main)

250 N. Water, Ste. 300
Wichita, KS 67202

DUKE
DRILLING COMPANY
ROTARY DRILLING CONTRACTOR
620 Hubbard PO Box 823
Great Bend, KS 67530
100 S. Main, Ste. 410,
Wichita, KS 67202

Your Company

1/8 page ad here

BULLETIN CONTENT POLICY

Effective January 1, 2018, only ads for service companies and geologists offering their services will be permitted in the KGS Bulletin. Furthermore, only content of geologic interest or official KGS functions (technical talks, annual banquet, golf tourney, picnic etc.) will be permitted in this bulletin. This policy is in keeping with maintaining a professional standard for this publication. Any interpretation of this policy rests solely with the editor of this bulletin.



AAPG Needs You!

Professional geoscientists, share your world!

The Mid Continent Section has **17 AAPG Student**

Chapters, but only **3 Visiting Geoscientists**...which makes it almost impossible to have a professional geoscientist visit to each school at least once a year or even once every two years. The aim of AAPG's program is to give students a flavor of a professional life in energy resources. It also hopes to encourage dialog between industry and academia.

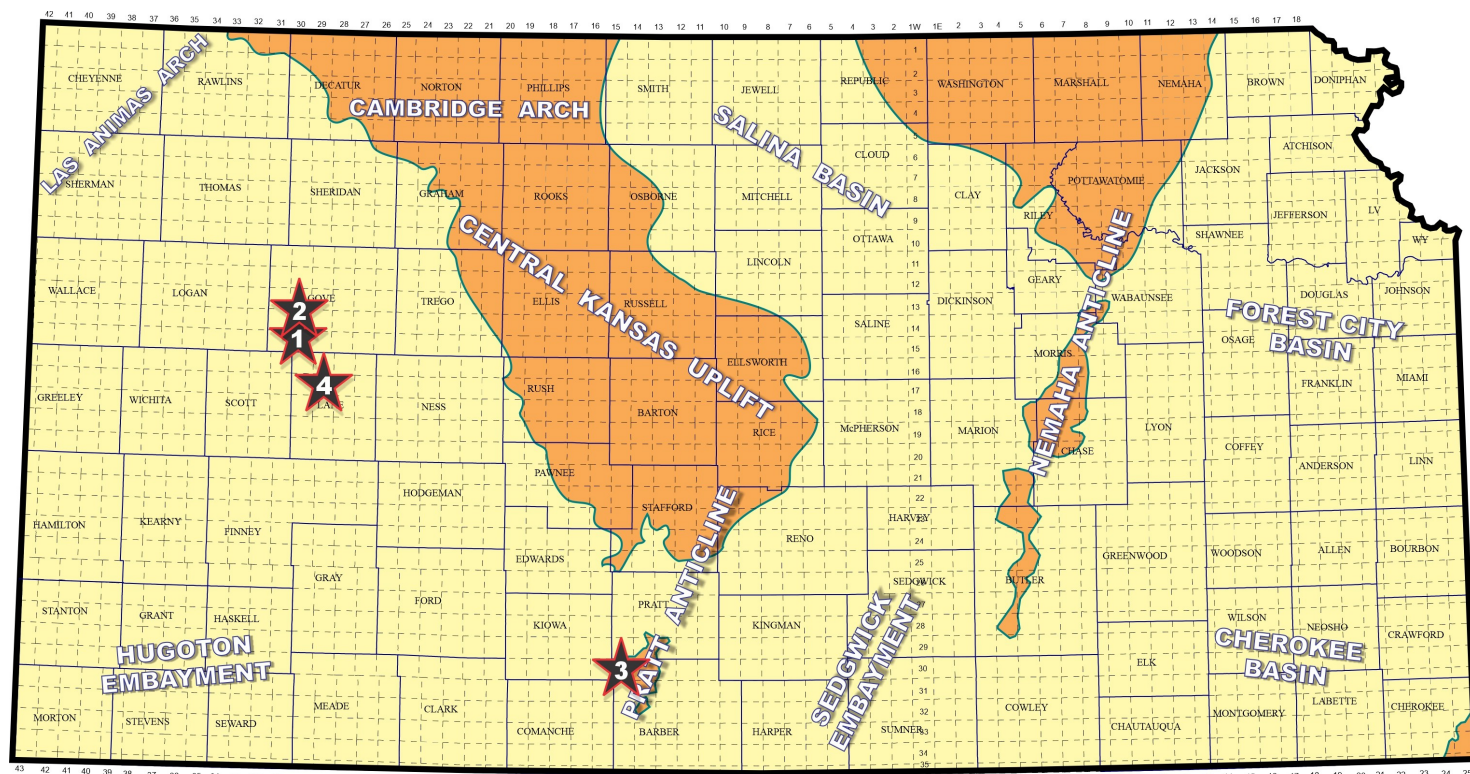
To be a Visiting Geoscientist bearing the AAPG flag, you are asked to have at least 5 years of experience and make at least one visit per year to a university. It can be a school with an AAPG Student Chapter, or a college/university without one. Your choice.

The Mid Continent schools with Student Chapters are: Missouri University, Fort Hays State University, Iowa State University, Kansas State University, Missouri State University, University of Nebraska, Northwest Missouri State University, Oklahoma State University, University of Oklahoma, University of Arkansas, University of Iowa, University of Kansas, University of Missouri, Columbia University of Tulsa and Wichita State University.

Contact Robbie Gries, co-Chair VGP committee, Denver, if you are interested in learning more. rrgries@aol.com

Exploration Highlights

By John H. Morrison, III
Independent Oil & Gas Service



Map courtesy of Marc Summervill

1. ARP Operating LLC, of Denver (CO), has a new Cherokee (Johnson Zone) oil discovery in Gove County at a remote wildcat site. The discovery well, #1 Juggernaut, spotted in approximately SE NW SW in section 16- T15s- R30W, was placed on pump on March 2nd for an undisclosed daily potential. Completion details remain confidential. Duke drilling Rig #4 was used to drill the well to a total depth of 4,330 ft. Drill site is located three miles from another

Cherokee and Lansing-Kansas City producer that established the Sharp Northwest pool in the SW/4 of section 30- T15s- R30W in 2014. ARP's latest pool discovery awaits a field name. The field area lies about ten miles north and three miles west of Healy, Kansas. (Ref: API 15-063-22460)

2. Murfin Drilling Company, of Wichita (KS), has discovered Morrow oil reserves in the Lundgren pool at the #1-36 Slim Unit, SE NE NW in section 36- T14s- R30W. The infield development well is also producing oil from the Marmaton (Fort Scott Limestone) and Cherokee (Celia Limestone) formations. Total depth is 4,400 ft. Completion details remain confidential. In addition to the productive zones mentioned above, the Lundgren pool has also produced oil from the Lansing-Kansas City zones since its establishment in 1952. The field area is located

11 miles south and 5-1/2 miles west of Gove, Kansas. (Ref: API 15-063-22458)

3. Independent producer Charles N. Griffin, of Pratt (KS), has found a new oil-bearing formation in the Turkey Creek East oil and gas field in Barber County. The #1-22 Jordan, NW NW SW in section 22- T30s- R15E, is producing an undisclosed amount of crude oil from the Marmaton (Fort Scott Limestone) formation. Total depth of the well is 4,900 ft. The Turkey Creek East pool has produced Cherokee oil, Mississippian oil, and Viola oil and gas since it was established in 1957. Field area lies about 2-1/2 miles north and 2-1/4 miles west of Sun City, Kansas. (Ref: API 15-007-24505)

4. Shakespeare Oil Company, of Salem (IL), has successfully extended production 1/2 mile south of the Middle Walnut pool boundary with the completion of the #1-32 Marlene in Lane County. The step out well was drilled in ~ NE SW SE in section 32- T17s- R29W, about 3 miles north and 3 miles east of the town of Amy, Kansas. The well is producing an undisclosed amount of crude oil from the Marmaton (Lenapah and Myrick Station Limestones) and Cherokee (Johnson Zone Limestone) formations. All zones are new pay sources for the field, which was established by O'Brien Resources in 2007 with Lansing-Kansas City production. Completion details are confidential. Southwind Drilling's Rig #8 drilled the well to a total depth of 4,580 ft. (Ref: API 15-101-22698)



March 2025

Sun	Mon	Tue	Wed	Thu	Fri	Sat
						1
2	3	4	5	6	7	8
9	10	11 KGS Board	12	13	14	15
16	17	18	19 KGF Board	20	21	22
23	24	25	26	27	28	29
30	31					

April 2025

Sun	Mon	Tue	Wed	Thu	Fri	Sat
		1	2	3	4	5
6	7	8 KGS Board	9	10	11	12
13	14	15	16 KGF Board	17	18	19
20	21	22	23	24	25	26
27	28	29	30			